

# D.C. MOTOR OF HPP RANGE



**ROTOMAJ**  
water energy motion



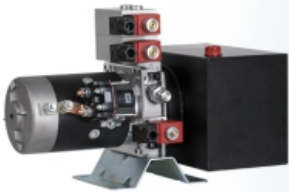
**Winch**



**Scissor Lift**



**Platform Lift**



**Hydraulic Power Pack**

**For Material Handling Equipment through use with Hydraulic power pack, as Drive motor, as Steering motor, as Platform lift motor, as wheel drive motor**



**Fork Lift**

**Tail Lift / Tail Gate**



**Boom Lift**



**Golf Cart**



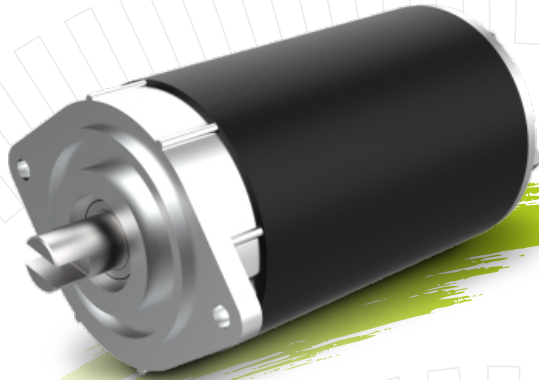
Features of Rotomag made DC Motor for the Application of

# Material handling Equipment



## G Series (Magnet Motor)

81 mm (3.2 Inch) Diameter  
150W to 800W



### Options for

- Thermal Switch
- Starter Switch
- Key Shaft
- Pinion (Gear) Shaft
- Customize Flange
- Open Case (No Drive Side Flange)

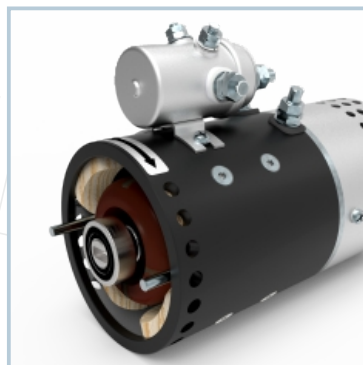
## HP Series (Series, Compound, Split Field Series)

114 mm (4.5 Inch) Diameter  
1kW to 2.2W



### Options for

- Thermal Switch
- Starter Switch (Normal or Trombetta)
- Open Case (No Drive Side Flange)
- Key Shaft
- Tongue Shaft
- Slotted Shaft
- Pinion (Gear) Shaft
- Customize Flange
- SAE Pump Mounting Flange/Shaft
- With Fan (Extended duty Cycle)
- Bi-direction (Split Field Series)



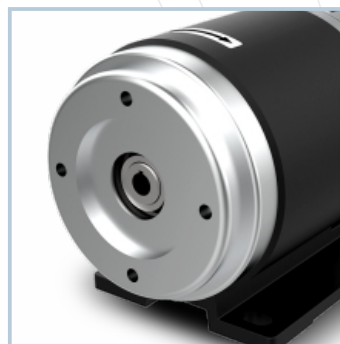
## BT Series

125 mm (4.9 Inch) Diameter  
2kW to 3W



### Options for

- Thermal Switch
- Starter Switch (Normal or Trombetta)
- Open Case (No Drive Side Flange)
- Key Shaft
- Tongue Shaft
- Slotted Shaft
- Pinion (Gear) Shaft
- Customize Flange
- SAE Pump Mounting Flange/Shaft
- With Fan or Without Fan
- Bi-direction (Split Field Series)



## FT Series

151 mm (5.9 Inch) Diameter  
2kW to 4W



**ROTOMAG**

DC MOTORS FOR  
INDUSTRIAL APPLICATIONS

[www.rotomag.com](http://www.rotomag.com)

**ROTOMAG**  
*Water from the Sun*

SURFACE & SUBMERSIBLE  
SOLAR PUMPS

[www.rotosol.solar](http://www.rotosol.solar)

**rotomotive**  
*looks good. performs better.*

AC MOTORS AND  
GEARBOXES

[www.rotomotive.com](http://www.rotomotive.com)

 **CYCLO**

PLANETARY & CYCLODIAL  
GEARBOXES

[www.cyplagear.com](http://www.cyplagear.com)

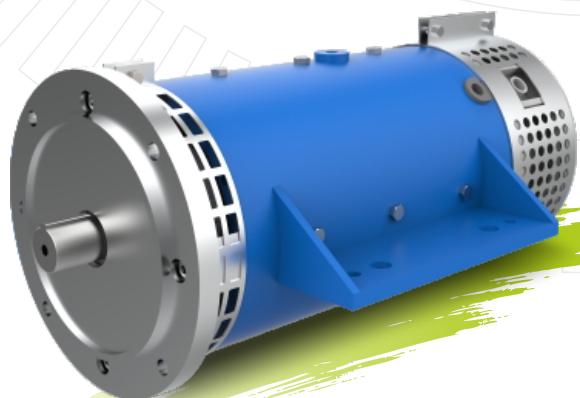
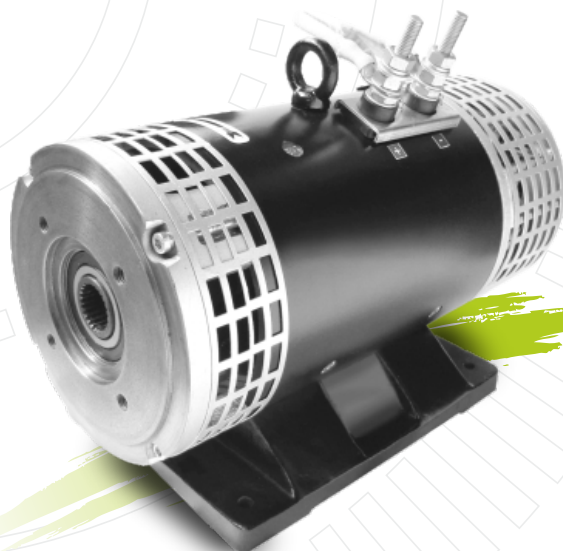
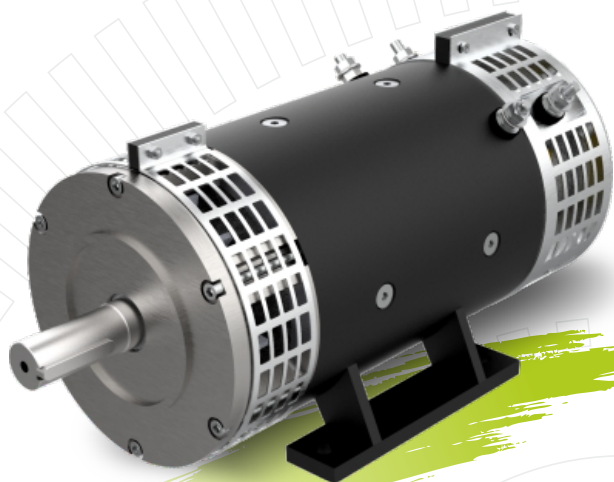


**ROTOMAG MOTORS & CONTROLS PVT LTD**  
2102/03 & 04, GIDC, Vitthal Udhyognagar,  
Near Anand - 388121, Gujarat, India

**Phone** : +91 92746 84894 / +91 93771 73406  
**Email** : [sales@rotomag.com](mailto:sales@rotomag.com)  
**Web** : [www.rotomag.com](http://www.rotomag.com)

## HW Series

171 mm (6.7 Inch), 180 mm (7 Inch) ,  
192 mm (7.6 Inch) Diameter  
2kW to 10W



## Options for

- Thermal Switch
- Starter Switch (Normal or Trombetta)
- Open Case (No Drive Side Flange)
- Key Shaft
- Tongue Shaft
- Slotted Shaft
- Pinion (Gear) Shaft
- Customize Flange
- SAE Pump Mounting Flange/Shaft
- With Fan or Without Fan
- Bi-direction (Split Field Series)

**ROTOMAG**

DC MOTORS FOR  
INDUSTRIAL APPLICATIONS

[www.rotomag.com](http://www.rotomag.com)

**ROTOMAG**  
*Water from the Sun*

SURFACE & SUBMERSIBLE  
SOLAR PUMPS

[www.rotosol.solar](http://www.rotosol.solar)

**rotomotive**  
*looks good. performs better.*

AC MOTORS AND  
GEARBOXES

[www.rotomotive.com](http://www.rotomotive.com)

 **CYCLO**

PLANETARY & CYCLODIAL  
GEARBOXES

[www.cyplagear.com](http://www.cyplagear.com)



**ROTOMAG MOTORS & CONTROLS PVT LTD**  
2102/03 & 04, GIDC, Vitthal Udhyognagar,  
Near Anand - 388121, Gujarat, India

**Phone** : +91 92746 84894 / +91 93771 73406  
**Email** : [sales@rotomag.com](mailto:sales@rotomag.com)  
**Web** : [www.rotomag.com](http://www.rotomag.com)